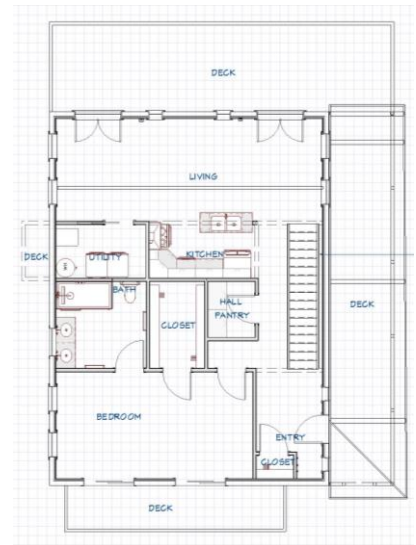




The Oasis 2

This 4 Bedroom, 3 Bath home has 2412 sq ft of living. This home uses solid northern white cedar walls to provide a beautiful, energy-efficient and structurally sound home. The footprint for the Oasis 2 is 40'x45' with approximately 1,419 sq ft of impervious surface. The Oasis 2 features private balconies for each of the bedrooms, a great room with vaulted ceiling and expose timber beams. The main entrance to the home is accessed via a covered porch that runs front to back and wraps around to a spacious deck.

Naturally Home Consulting, LLC provides design services, supervises the construction and ensures customer satisfaction. Backed by Moosehead Cedar Log Homes, we provide a quality home package from a leader in the log home manufacturing industry for 40 years.



The Oasis 2

Why Moosehead?

- Solid Cedar Walls – Moosehead uses northern white cedar for weather-resistance and high natural insulation values
- System-built – Each log is milled for a specific location to provide a home engineered to stand up to Mother Nature
- Energy-efficient – The Enhanced Insulation Package from Moosehead ensures maximum energy efficiency with integrated solid mass walls
- Sustainable materials – Our northern white cedar forests are responsibly managed
- Made in the USA – Our mills in Maine use locally harvested trees and ship houses worldwide
- Backed by Moosehead Cedar Log Homes – MCLH has been a leader in the log home industry for 54 years
- Need more information? Call, e-mail or visit our website.

The Moosehead Enhanced Insulation Package

- Walls
 - Exterior northern white cedar log (R-9)
 - Solid insulation
 - ½" – R-16
 - 1" – R-16
 - 1 ½" – R-23
 - 2" – R-26
 - ¾" strapping
 - Interior wall board (tongue & groove cedar standard)
- A Purlin Roof System
 - 30-year shingles
 - Underlayment
 - 2x4 strapping for air flow
 - Solid Insulation
 - 4" – R-28
 - 5" – R-36
 - 6" – R-43
 - 7" – R-49
 - 8" – R-56
 - More underlayment
 - Tongue & Groove Pine ceiling

