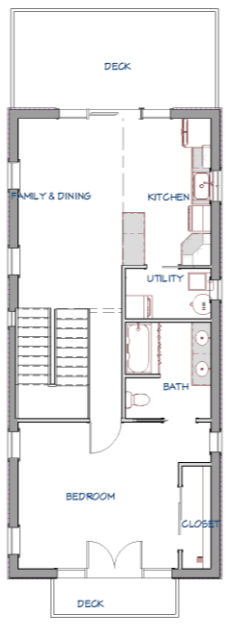
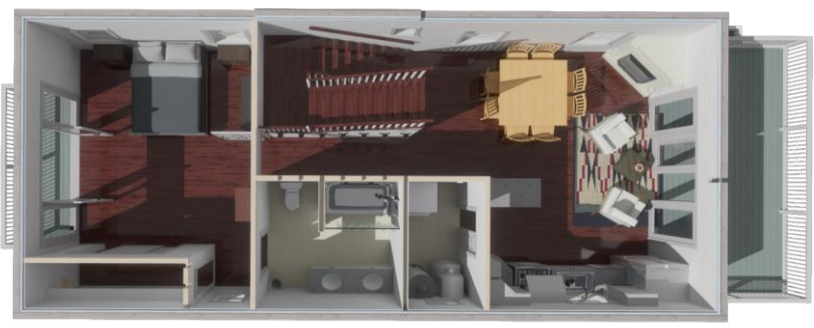




# The Oasis 3

This 3 Bedroom, 3 Bath home has 1800 sq ft of living. This home uses solid northern white cedar walls to provide a beautiful, energy-efficient and structurally sound home. The footprint for the Oasis 3 is 25'6"x53' with approximately 1,104 sq ft of impervious surface. The Oasis 3 features balconies or decks accessible from each bedroom as well as a generous deck off the family room. The main entrance to the home is accessed through the garage area to provide both security and protection from the weather.

Naturally Home Consulting, LLC provides design services, supervises the construction and ensures customer satisfaction. Backed by Moosehead Cedar Log Homes, we provide a quality home package from a leader in the log home manufacturing industry for 40 years.



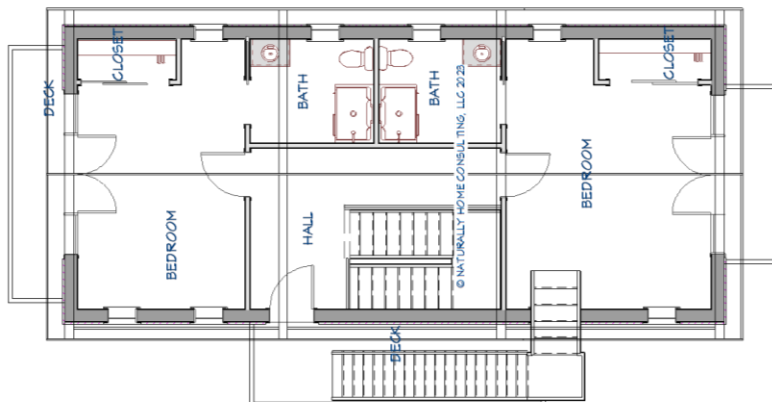
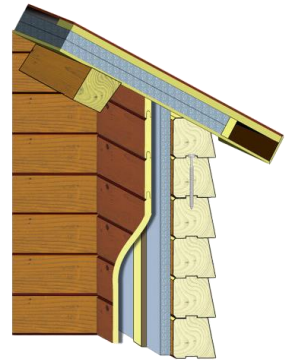
# The Oasis 3

## Why Moosehead?

- Solid Cedar Walls – Moosehead uses northern white cedar for weather-resistance and high natural insulation values
- System-built – Each log is milled for a specific location to provide a home engineered to stand up to Mother Nature
- Energy-efficient – The Enhanced Insulation Package system from Moosehead ensures maximum energy efficiency with integrated solid mass walls
- Sustainable materials – Our northern white cedar forests are responsibly managed
- Made in the USA – Our mill in Oakfield Maine uses locally harvested trees and ships houses worldwide
- Backed by Moosehead Cedar Log Homes – MCLH has been a leader in the log home industry for 40 years
- Need more information? Call, e-mail or visit our website.

## The Moosehead Enhanced Insulation Package

- Walls
  - Exterior northern white cedar log (R-9)
  - Solid insulation
    - ½" – R-16
    - 1" – R-16
    - 1 ½" – R-23
    - 2" – R-26
  - ¾" strapping
  - Interior wall board (tongue & groove cedar standard)
- A Purlin Roof System
  - 30-year shingles
  - Underlayment
  - 2x4 strapping for air flow
  - Solid Insulation
    - 4" – R-28
    - 5" – R-36
    - 6" – R-43
    - 7" – R-49
    - 8" – R-56
  - More underlayment
  - Tongue & Groove Pine ceiling



Shown with stairs to optional rooftop deck.